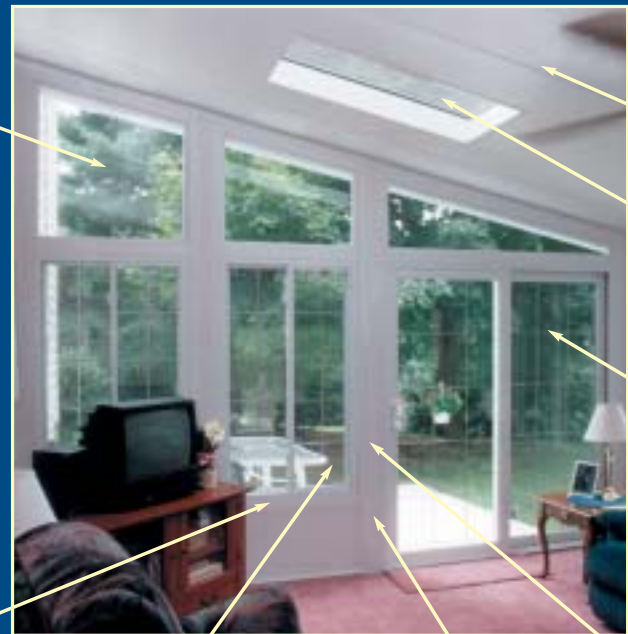


Dreamspace®

At last! A patio enclosure system designed for both form and function... with an exciting array of features and options that will enhance the soul of your home.

The Dreamspace® Patio Enclosure System is constructed of thermally broken channels in the walls and roof, creating a thermal barrier against outdoor elements. It features fusion-welded vinyl and insulating glass windows and doors, available with your choice of glass packages. These are the same high quality, energy efficient windows and doors that have helped millions of homeowners across the U. S. reduce their energy bills and live more comfortably.



Clean Interior Lines with New Trapezoid Picture Window & Kick Panels



- No interior window or door moulding
- New narrow-line insulating glazing system

Beveled Aluminum Window Moulding



- Aesthetically pleasing, exterior window moulding with hidden structural corner keys and no exposed fasteners

Windows & Doors

- Fusion-welded vinyl and insulating glass systems
- Meet stringent AAMA 101 and NFRC test requirements

Superior Structural Integrity



- New factory assembled module design

Thermocore Roof

- Provides superior insulation, sound proofing and minimum maintenance

Optional Fixed or Operating Skylights

- With Peak Performance™ Glass featuring Low-E and Argon Gas

Legance™ II Sliding Patio Door



- Monorail track design for easy operation

Reduced Fill Panels



- Minimum H-mullion and fill requirements for GREATER VIEWING AREA!

ALL DREAMSPACE® ENCLOSURES ARE CUSTOM DESIGNED TO YOUR SPECIFIC DIMENSIONS. FINISHED DESIGNS MAY VARY FROM PHOTOGRAPHS SHOWN.

Features...

Professionally engineered and structurally tested, Dreamspace®'s extraordinary features include:

- NFRC and AAMA tested, fusion-welded vinyl and insulating glass windows and patio doors—You'll have superior protection against the outside elements including heat, cold, air and water.
- Polyurethane Thermal Breaks—All aluminum structural members in the roof and walls incorporate to form a thermal barrier, that inhibits the transfer of heat or cold from the outside to the inside.
- Screen Room Conversion—Sliding window sashes lift out for quick conversion to a screen room, allowing maximum ventilation without annoying insects.
- Symmetrical wall and roof design—Proportionate to each other, the panels produce an architecturally pleasing patio enclosure.
- Thermocore 3" roof and integral gutter—This roof system provides superior insulation, soundproofing and minimum maintenance.
- Attractive exterior/interior embossed aluminum wall surface—White, Sand or Bronze.
- Easy-glide slider windows and patio doors—Double hung, bay, and casement styles also available, along with full-view entry doors.

Configurations...



Window modules with solid kick panels



Window modules with glass transoms above



Window modules with glass kick panels below



Window modules with glass transoms above and glass kick panels below

Max Glass—wall configuration featuring more glass and less fill panels. Provides greater viewing area, increased daylight and greater ventilation capabilities.



XL 117C 12/02 50M
© 2002 Thermal Industries, Inc. Dreamspace®, Dream, and DreamGlas are registered trademarks of Thermal Industries, Inc. Legance and Performance are trademarks of Thermal Industries, Inc. SunClean is a trademark of PPG Industries. The ENERGY STAR name and logo are registered US marks and owned by the United States Government.

Visit our web site: www.thermalindustries.com

Options...

- Peak Performance™ Glass—dual pane insulating glass package featuring Low-E and Argon Gas.
- Super Peak Performance™ Glass—triple pane insulating glass package featuring Low-E and Krypton Gas.



- Luran ASA—a durable alternative for your enclosure's interior and exterior walls. The Luran panel will not dent or scratch assuring a long-lasting, beautiful enclosure.



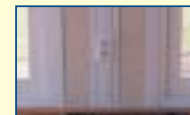
- Thermo-Dek—an optional deck on which to build a Dreamspace® Enclosure, that has an insulating R-Value of 17.0. It is extra strong and resistant to heat and cold. Thermo-Dek is also available with insulating values up to R-45.



- Stargazer II Skylight—an added source of light and ventilation for your enclosure, providing superior strength and insulating qualities. Features Peak Performance™ tempered safety glass with Low-E and Argon. Stargazer is also available as a fixed unit. Skylights are factory installed.



- DreamGlas®—capture the distinct textured look of decorative glass in an insulating window or door. Select from Jewel Cut, Color and Came styles to give your Dreamspace® a shimmering and colorful, decorative touch.



- Electric-Ready Chaseway—enables you to enjoy the comfort and convenience provided by this unique feature. This system enables you to add wall outlets, light switches, ceiling fans, decorative lighting, and heating or air conditioning to your Dreamspace®.



- Decorative Wall Coverings—select from a wide variety of patterns to enhance your home's decor.



- 6" Roof Panels—provide increased insulating values to R-38 (calculated with a mean temperature of 35 degrees Fahrenheit). Standard integral gutter shown.



- OSB Panels—enable you to add shingles to the roof of your Dreamspace®, creating an aesthetically pleasing transition between the enclosure and your house roof.

Ask your contractor about the latest in glass technology... SunClean™ Glass from PPG!



Dreamspace®

Patio Enclosures



Expand Your Living Space...

Dreamspace® Patio Enclosures will open up a world of opportunities for your family and friends, enabling all of you to enjoy the great outdoors during any season, with protection from unpredictable weather and annoying insects.



A Dreamspace® Patio Enclosure is a great place to relax and unwind after a hectic day.



Maximize the amount of sunlight in your Dreamspace® Patio Enclosure, by adding glass transoms and glass kick panels above and below slider windows.



Enclose an existing porch with the energy efficient Dreamspace® Window and Door System. Full-view door shown.



Want to create a seamless transition with your home's exterior? Siding can be added to your Dreamspace® Patio Enclosure. This enclosure also features double hung style windows.



A Dreamspace® Patio Enclosure makes an excellent recreation area for a pool table or hot tub. This enclosure features all sliding patio doors.



Sand color Dreamspace® Patio Enclosure featuring an optional cathedral style, shingled roof.



This couple loves the openness the Dreamspace® Patio Enclosure adds to their home. This Dreamspace® features a cathedral roof and glass transoms and kick panels, enabling them to enjoy their breath-taking view.



Dreamspace® Patio Enclosure with cathedral roof featuring slider windows and patio doors.



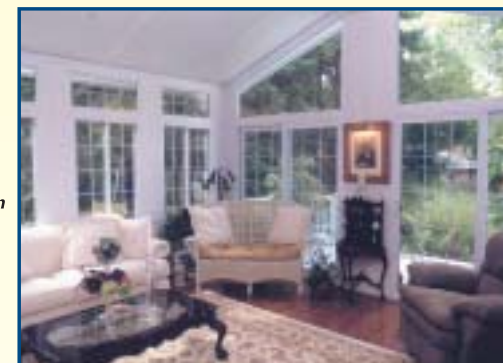
This Dreamspace® features a marquee style roof design. A maintenance-free Dream®Deck leads to the backyard.



Dreamspace® Patio Enclosure with a marquee roof design featuring optional skylights.



Create a cozy family room area with the Dreamspace® Patio Enclosure.



This Dreamspace® features slider windows and patio doors with optional colonial muntins.

Unlike other enclosures and sunrooms, the Dreamspace® Patio Enclosure System is custom-designed, sized and manufactured specifically for your home. In just a matter of days, you can increase the living space and recreational opportunities in your home with the highest quality products in the sunroom industry.



This Dreamspace® Patio Enclosure is designed with multiple levels and a marquee style roof.



A maintenance-free Dream®Deck outside this Dreamspace® Patio Enclosure enables family and friends to enjoy the great outdoors, no matter what the weather!



This homeowner uses her Dreamspace® as an art studio...imagine what you can do in your new Dreamspace®!



Ask about the ENERGY STAR® Qualified Products Program.

